

Panasonic Toughpad FZ-M1 System Board Replacement

MrJoshua 2024

Remove the battery and
the screws marked in red



Here's the type of screw
used in the top section
(which covers the SSD and
optional modules)

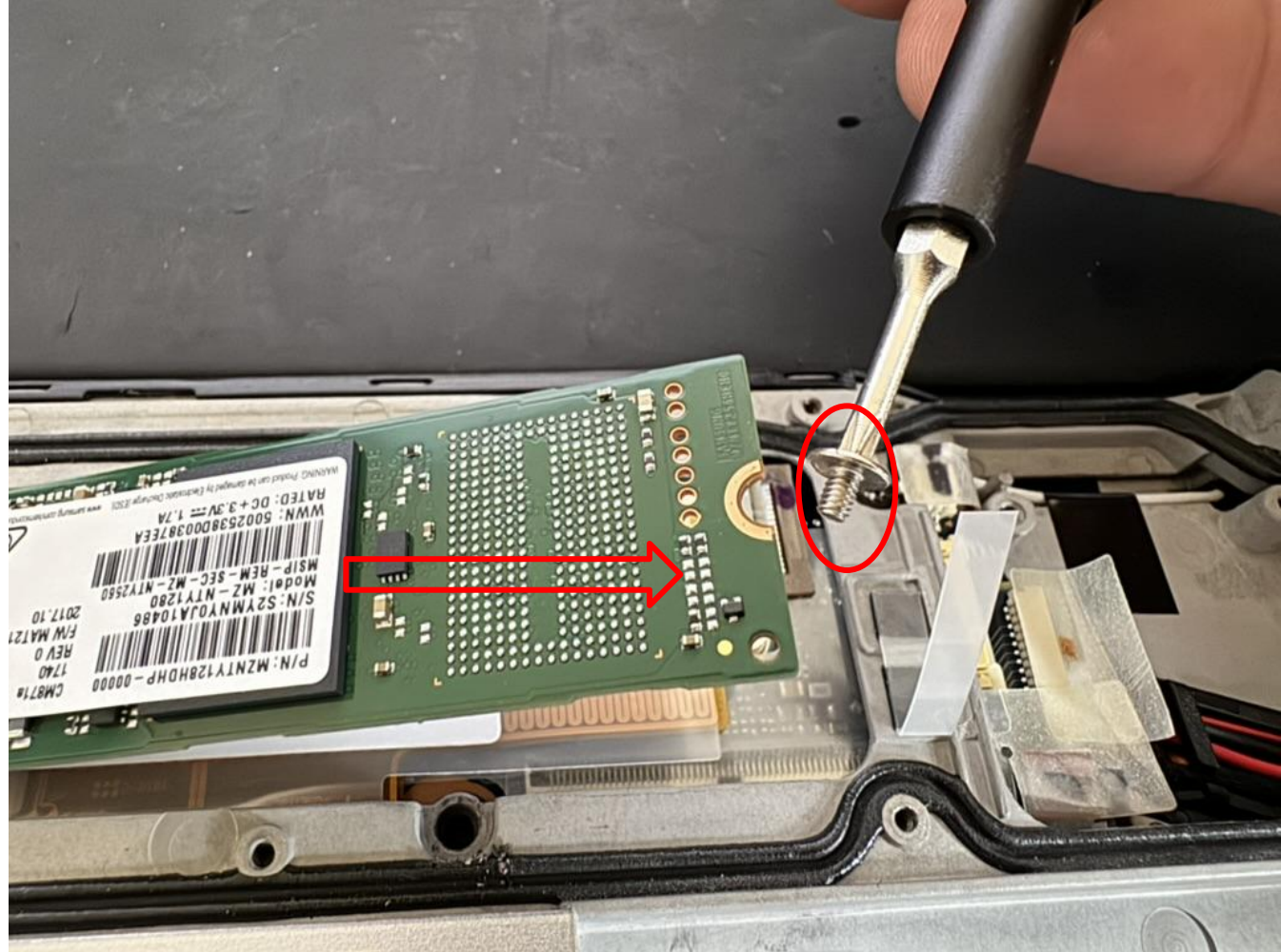


Here's the type of screw
used in the bottom section
(above the Micro SD Card /
SIM Card slots)

Remove any cards at this
time



Remove the M.2 SSD



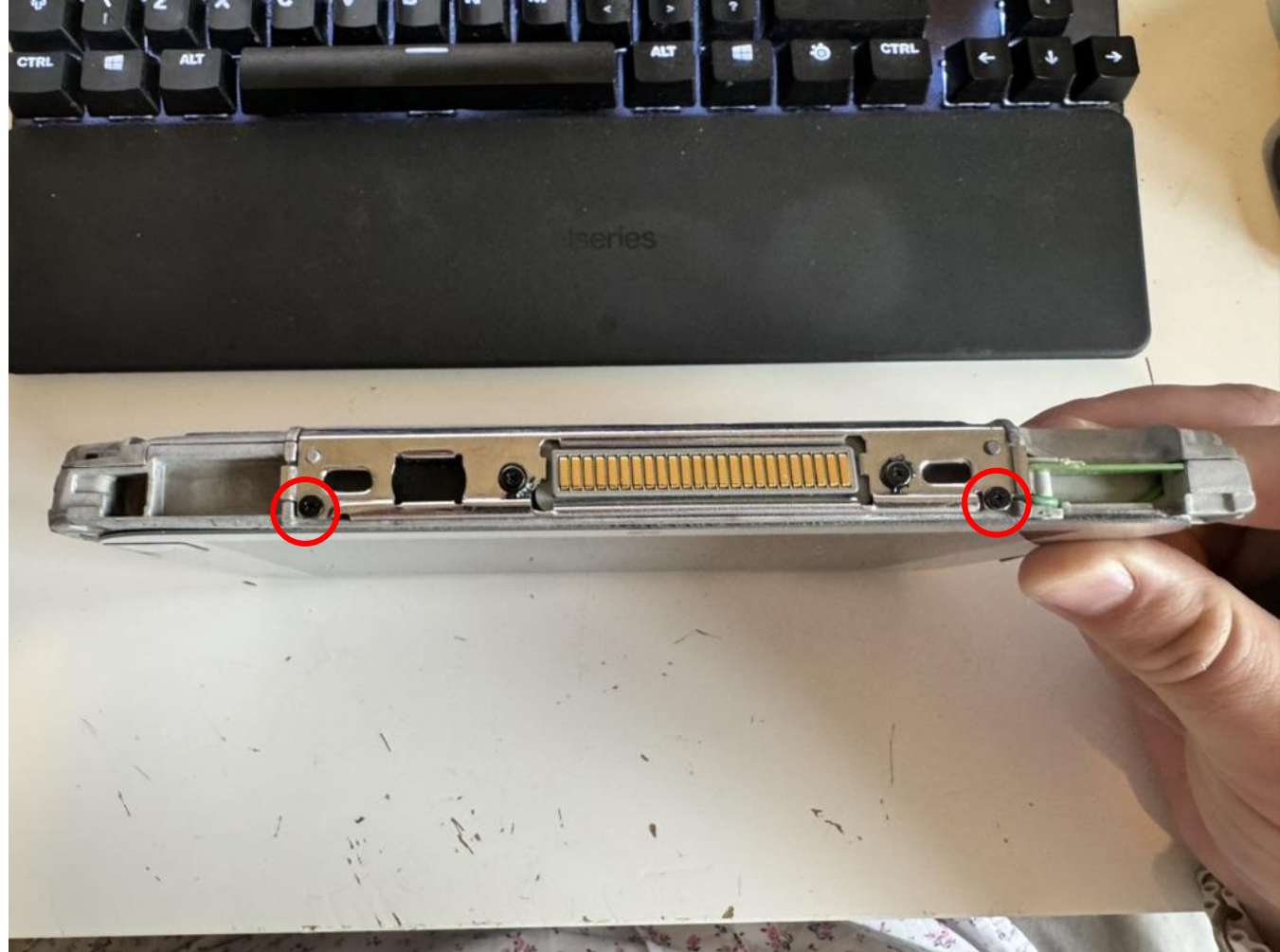
Remove the four screws from the corners of the bumpers, then slide the bumpers off



Remove the two screws
next to the docking
connector, then gently pry
off the black plastic



Remove the two screws
holding on the metal
around the docking
connector



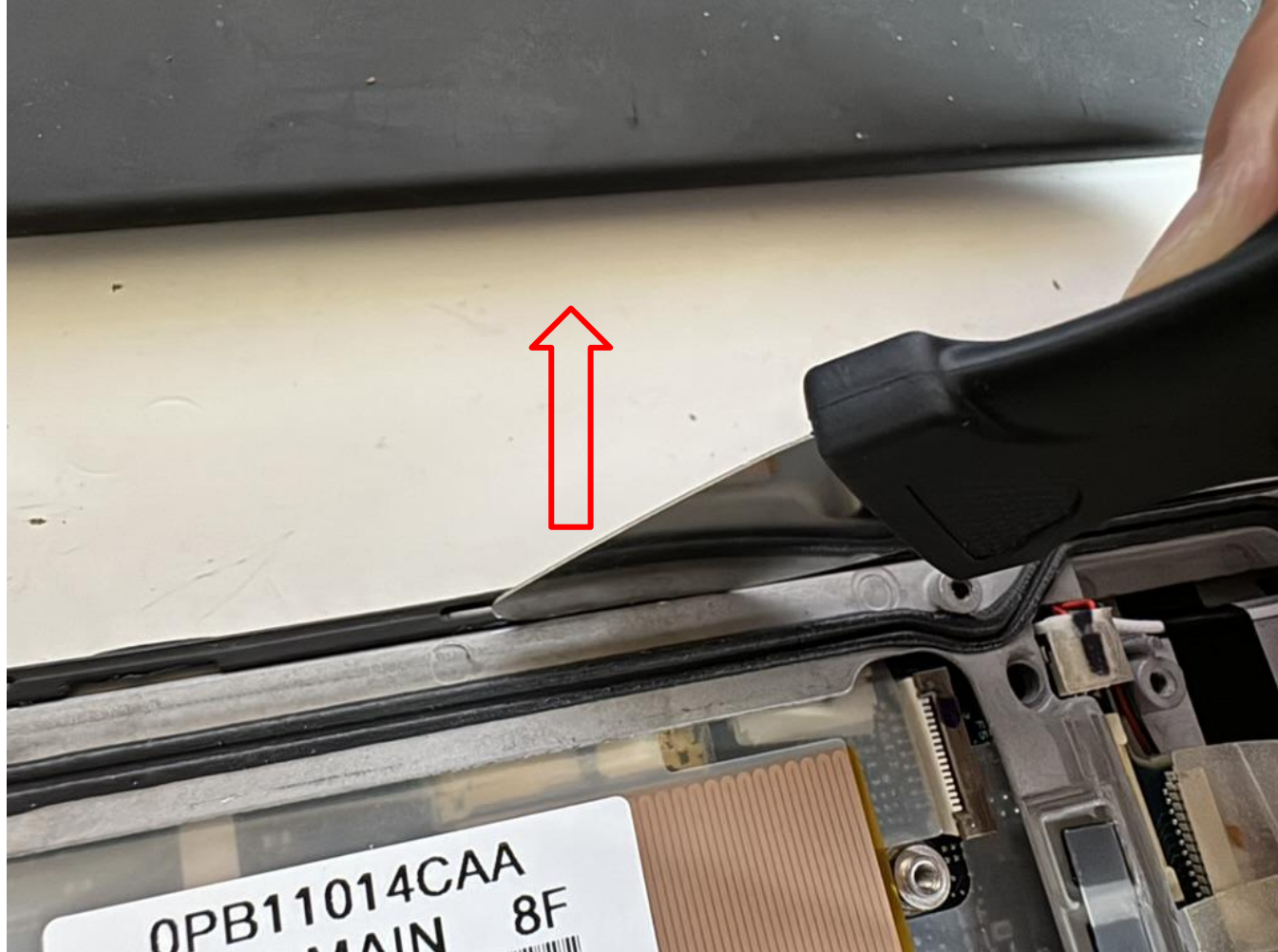
Remove the two screws
holding on the battery latch



Remove the two screws on
the button panel



Gently pry off the button panel



Remove this screw



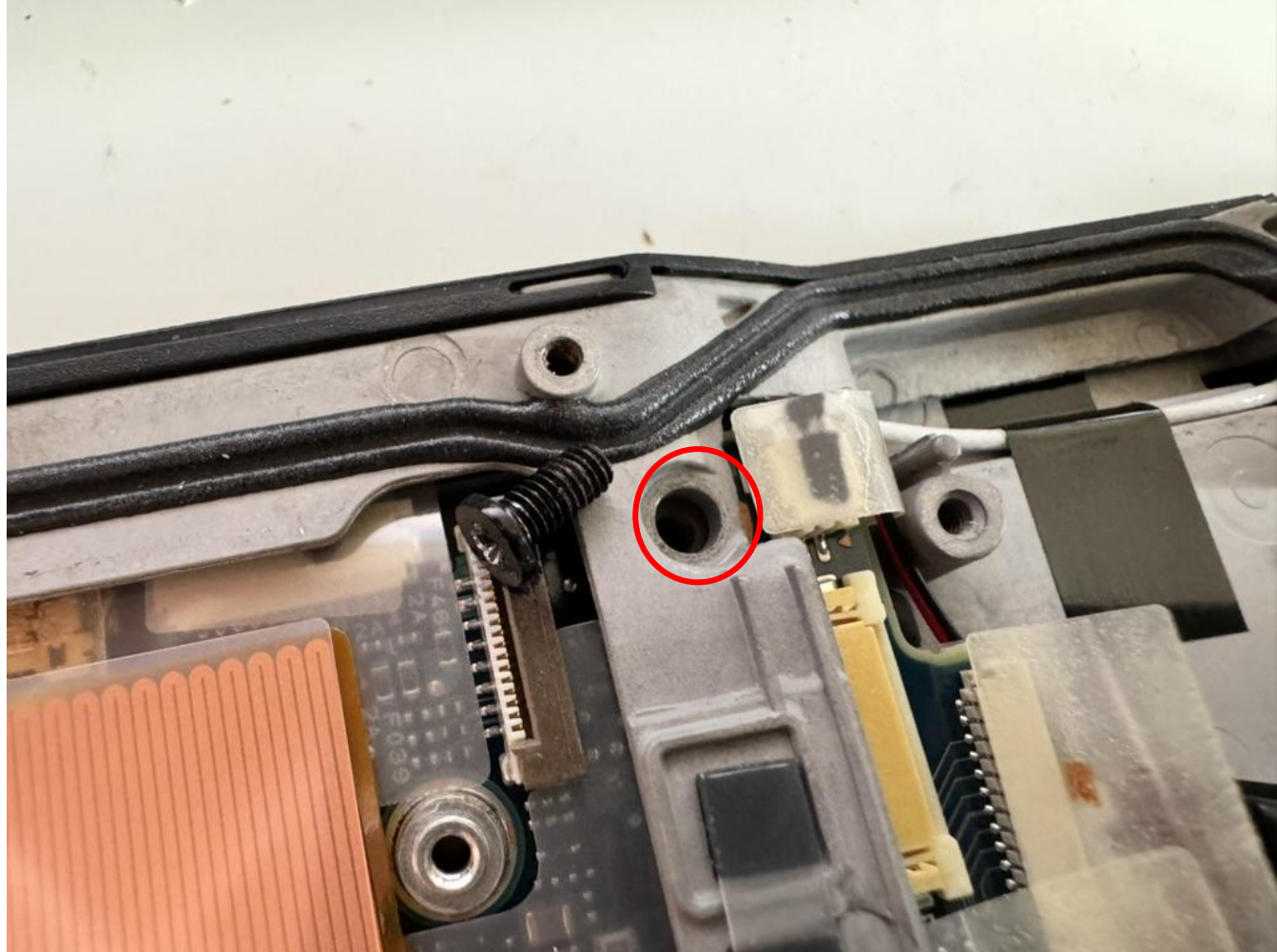
Remove this screw



Remove this screw too!



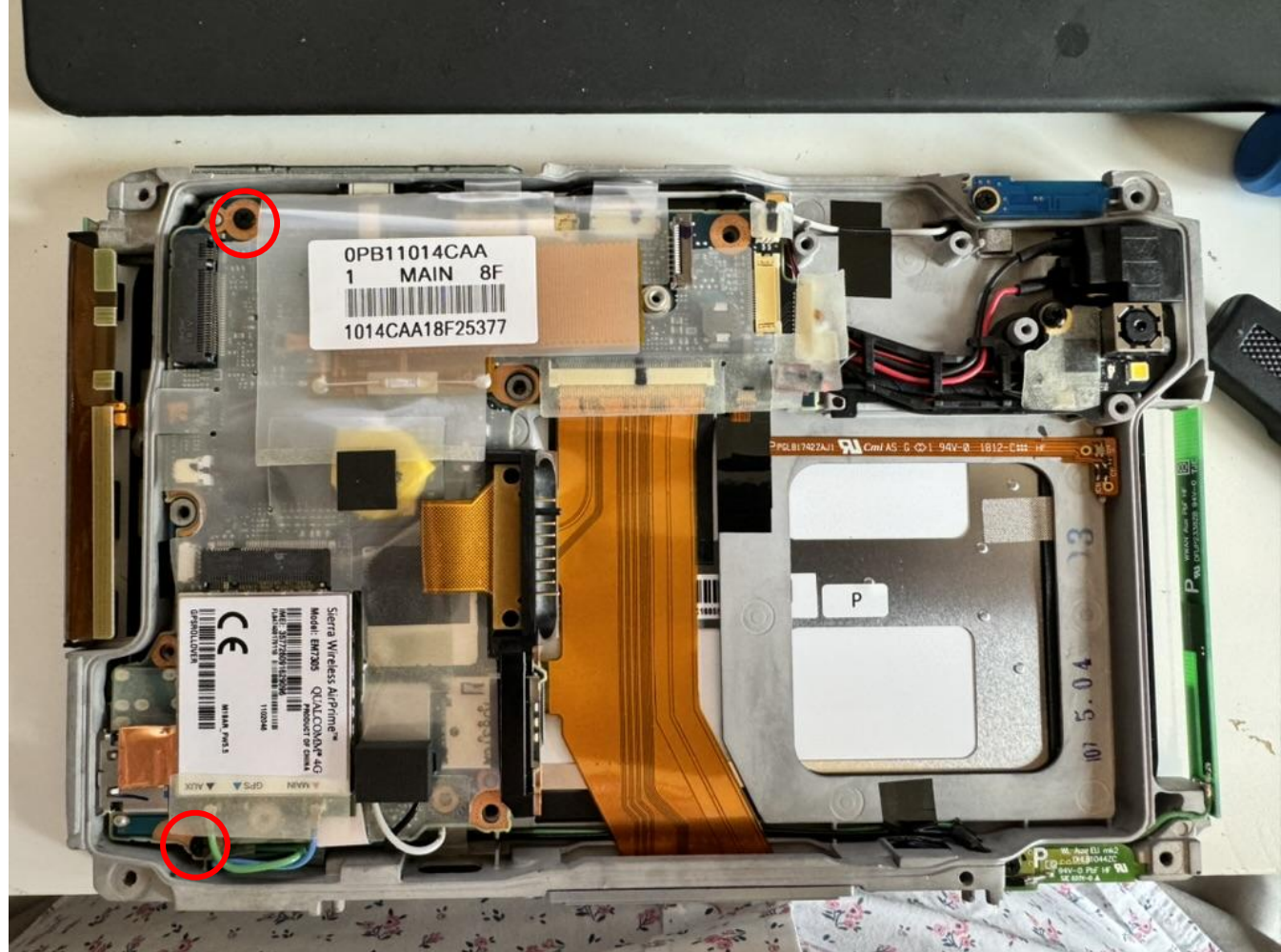
Hey, just remove all the screws!



Gently pry around the edges of the back case and it'll come off in your hand



Another two screws to
remove



Ooh, some things to
remove that aren't screws!



Another screw

Then remove the WWAN
card

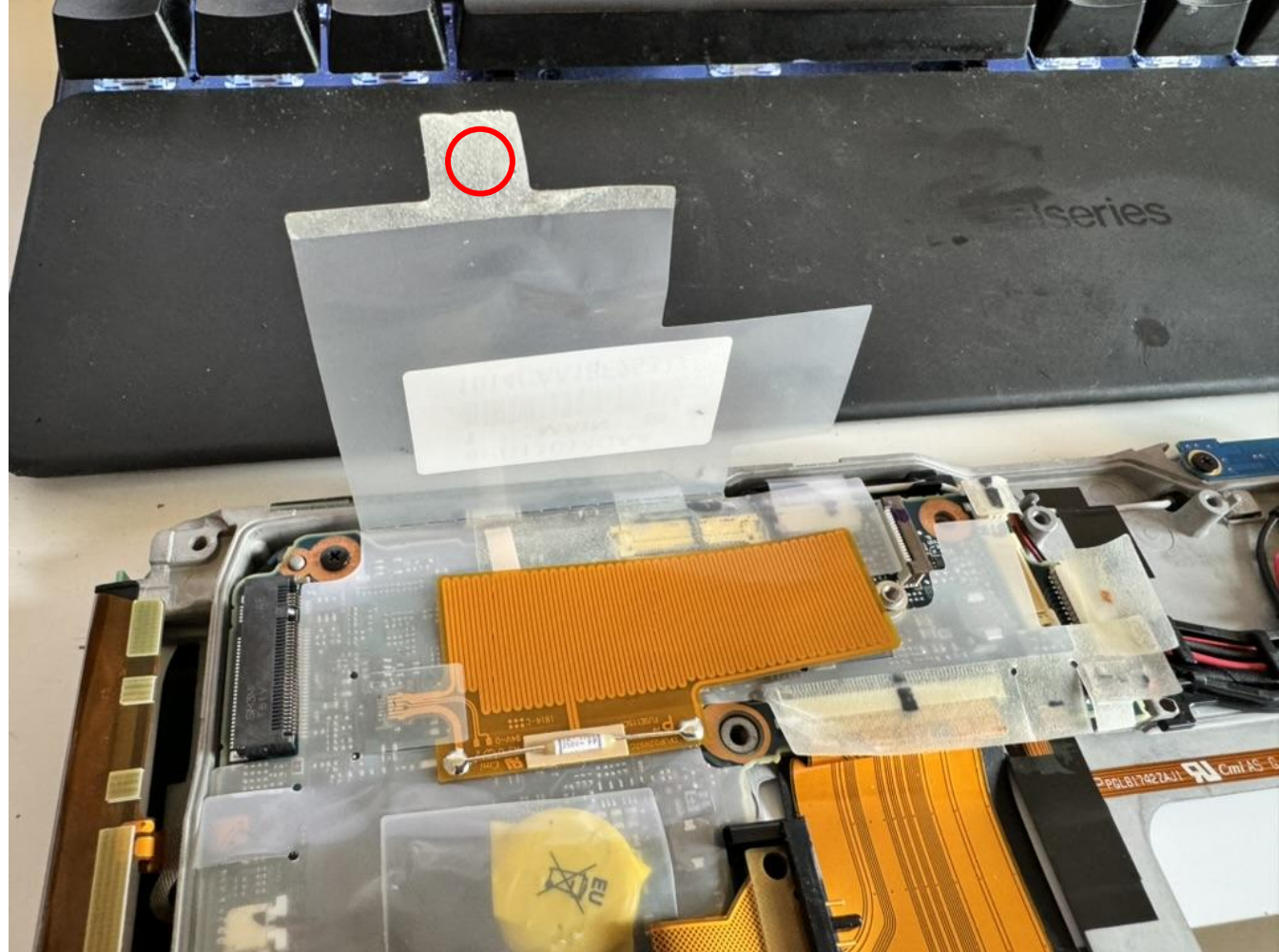


What do we have here?

Another pair of co-ax connectors attached to the WAN/BT module on the system board. Gently pull them off



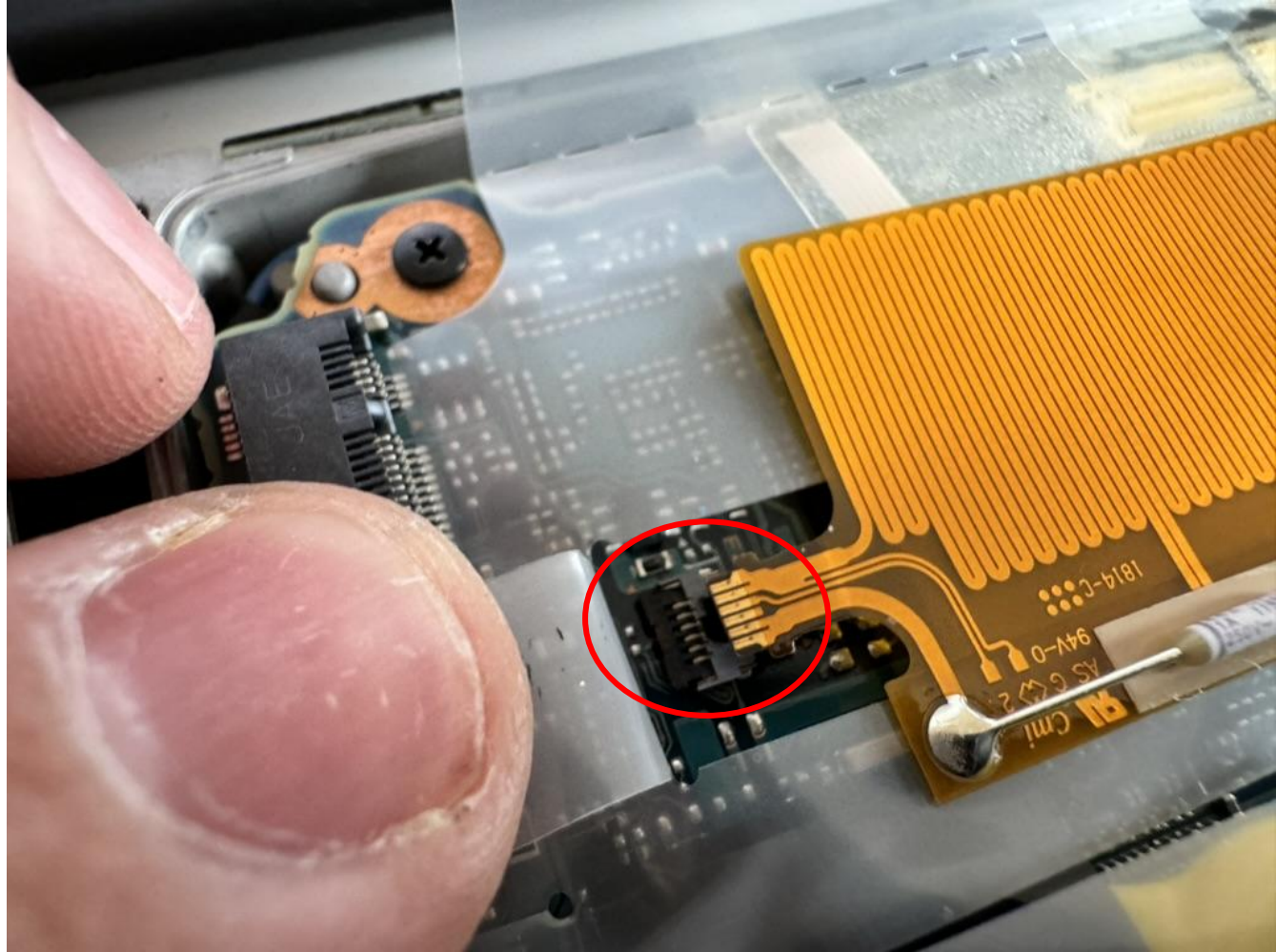
Peel back this sticky plastic bit



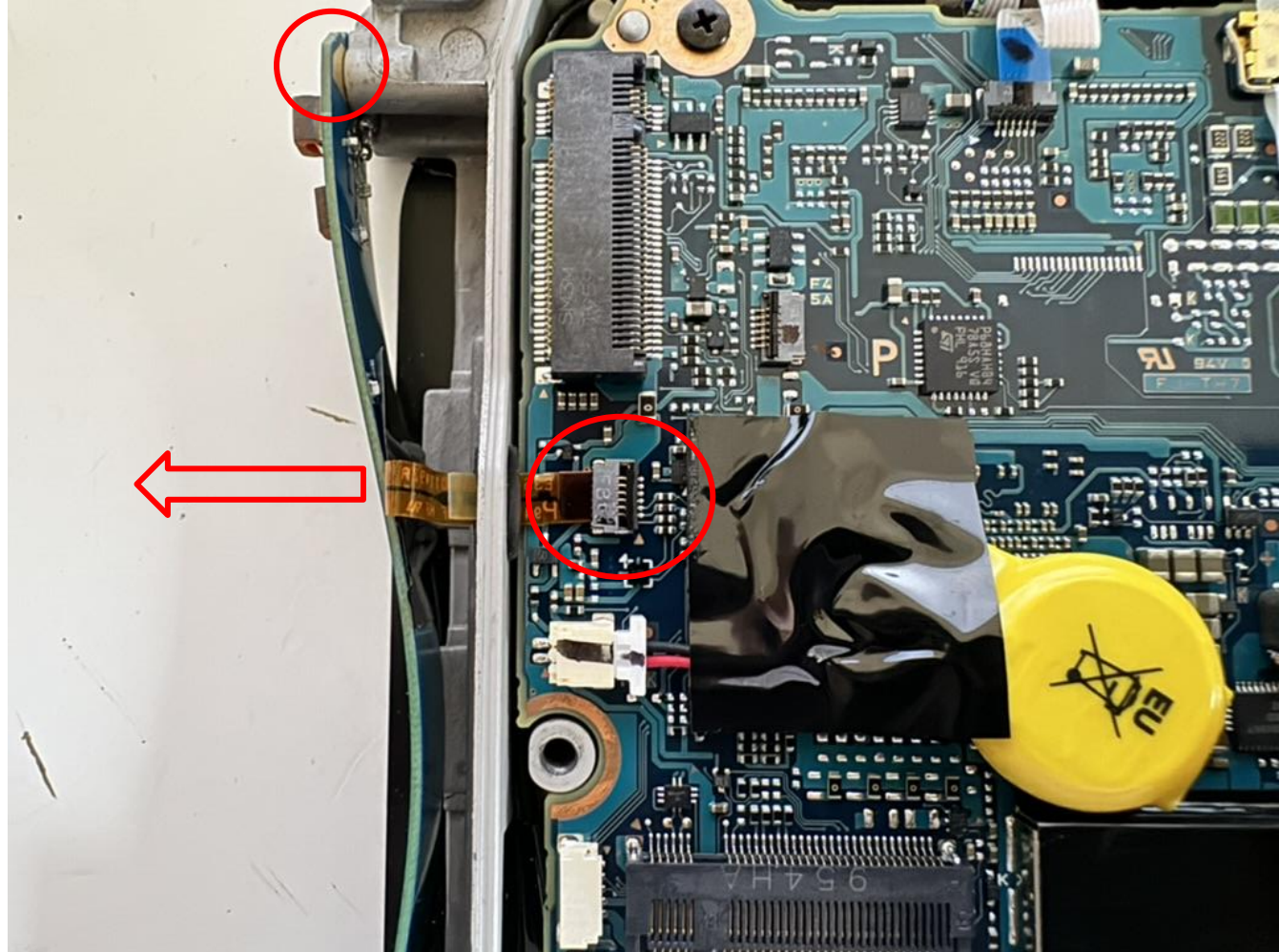
Pull back this plastic to reveal the SSD Heater connection

Flip the clasp and gently remove the connector

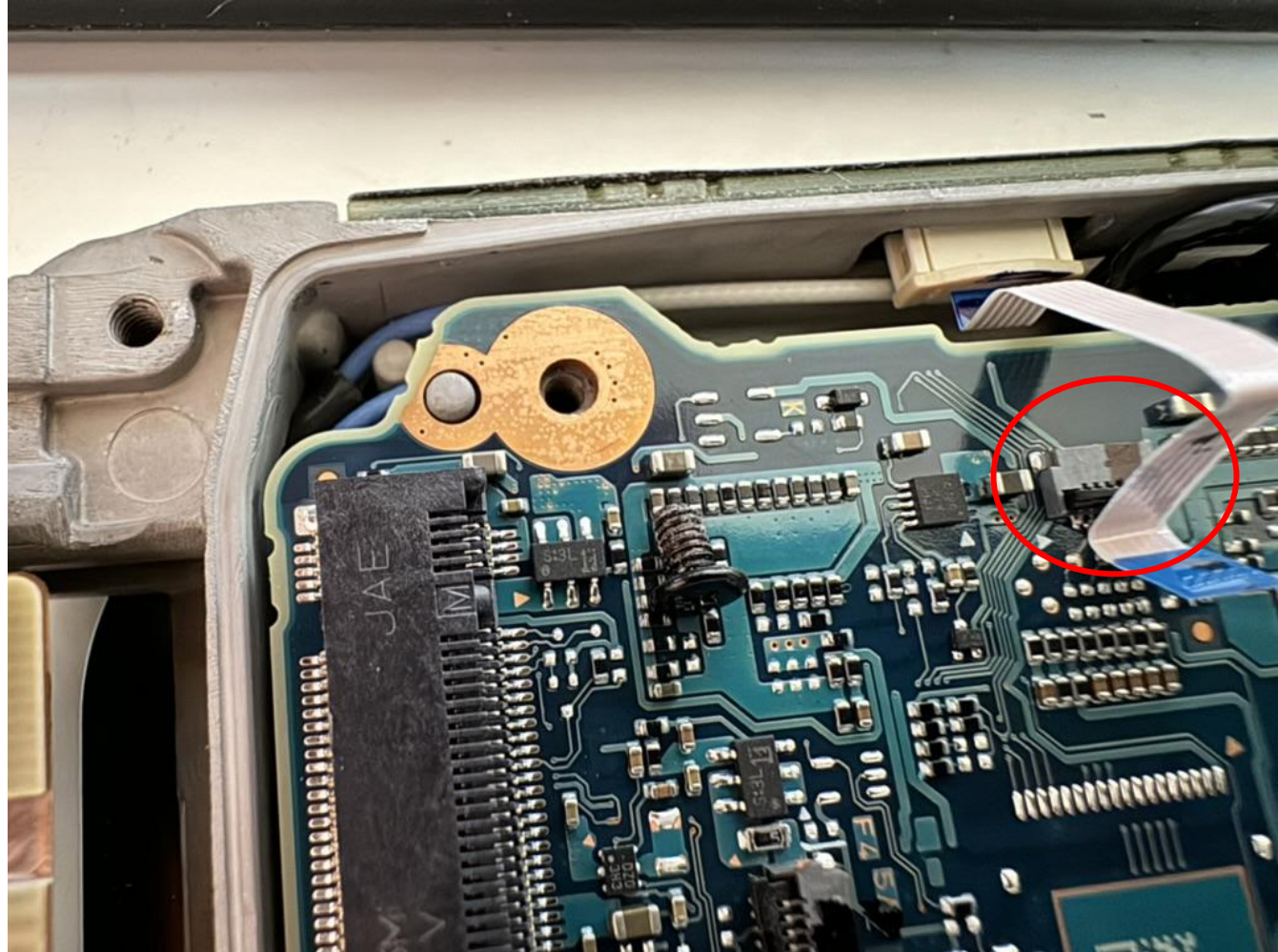
Gently remove the SSD heater flexible PCB - it's stuck on to the plastic with adhesive tape



Remove this screw, flip the clasp, and SUPER GENTLY remove this flexible pcb through the rubber grommet and away from the system board

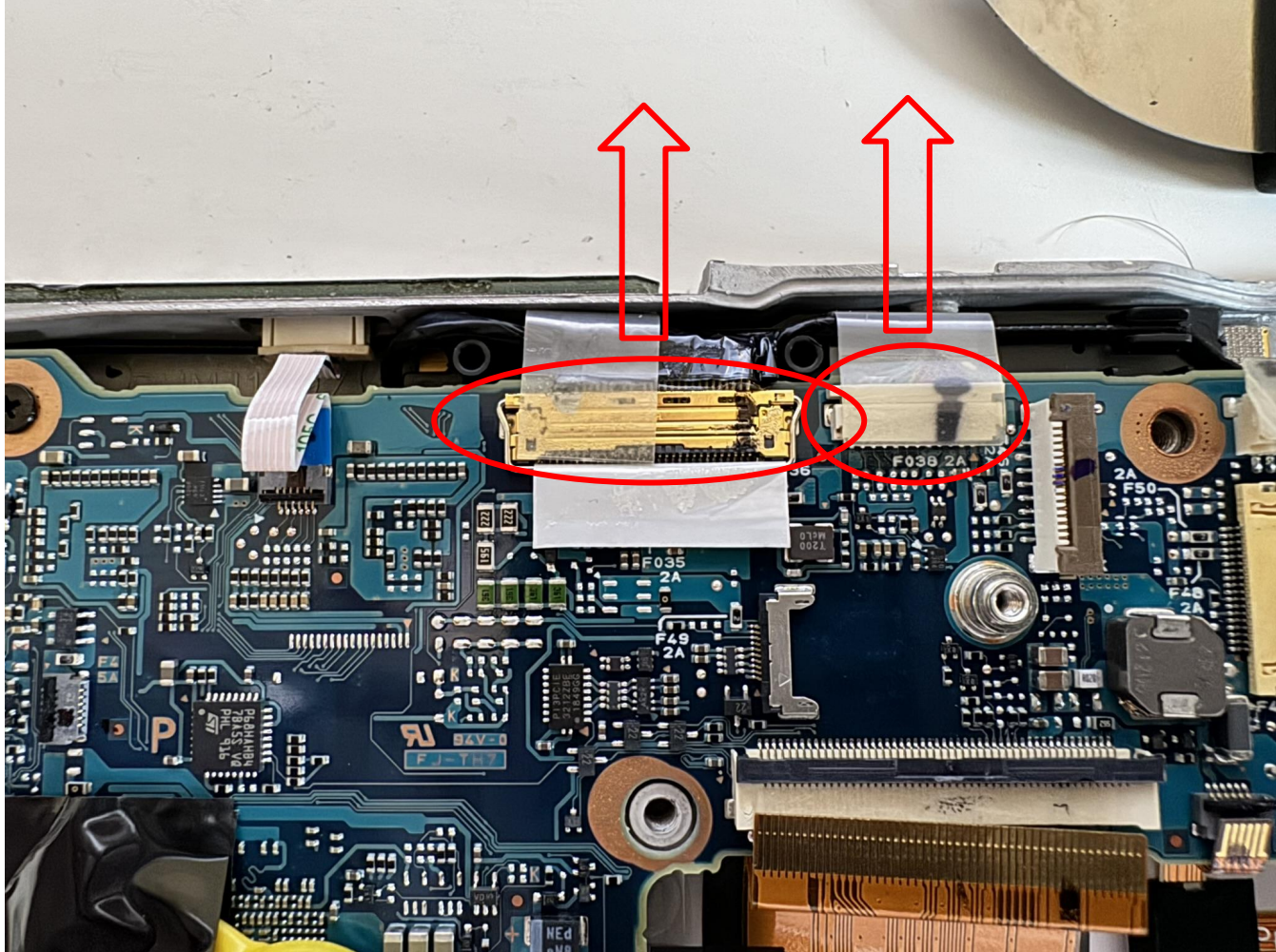


Flip another clasp and
remove the ribbon

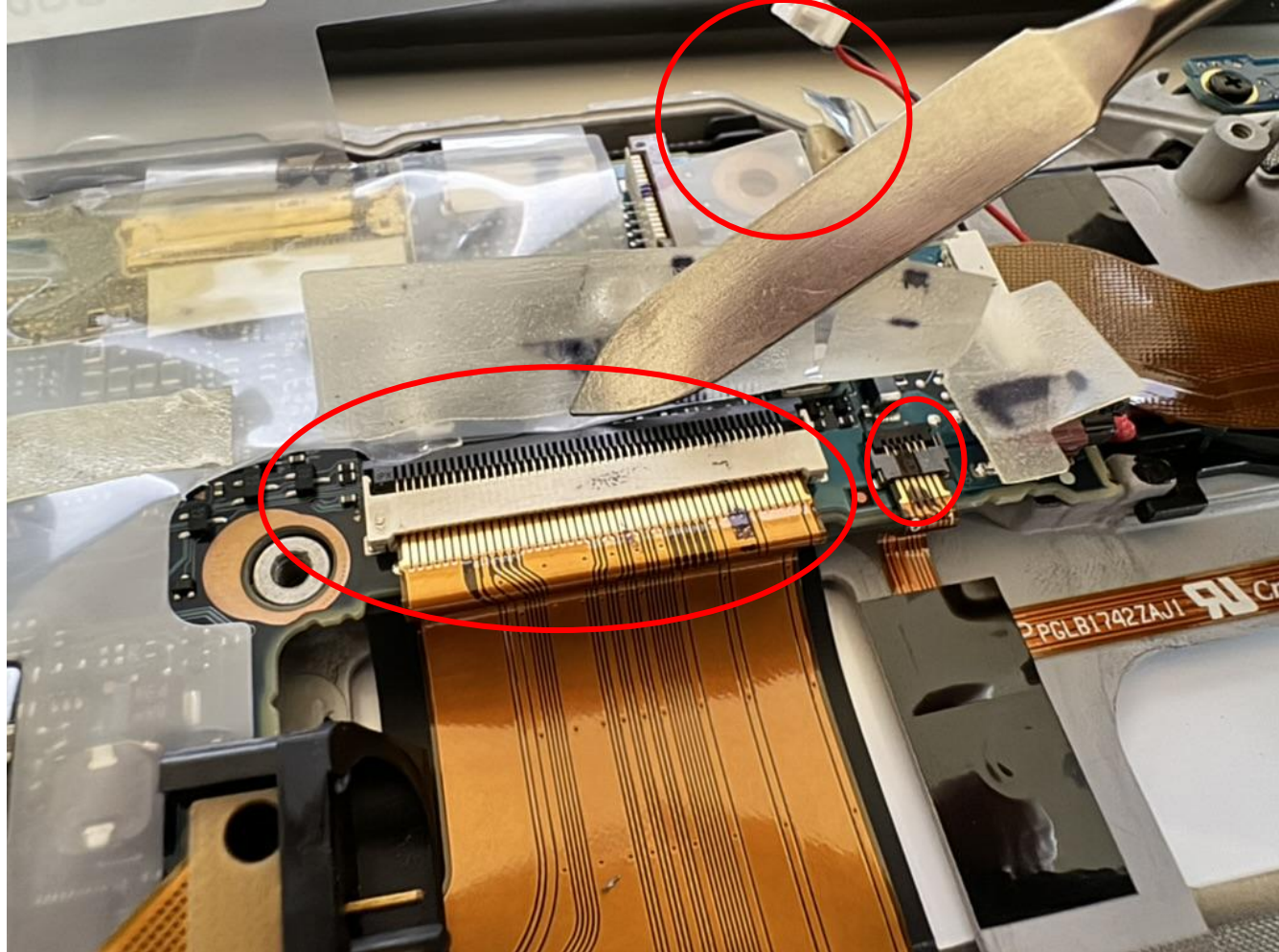


Peel back the sticky plastic and remove the right-hand connector

Similar for the left-hand connector, but this has a fancy flippy metal handle to help you pull it out



Another two flippy clasp
things and one speaker
connector to remove here



Woot, here's the system board on its own

Congrats!

Refitting is the reverse of removal :)

